

Care after surgery

- Apply antibiotic eye drops as instructed by doctor.
- Walk and move your head slowly
- Avoid excessive reading or TV watching
- Avoid heavy lifting
- Avoid knocking or rubbing your eye
- Avoid exercise for at least 2 weeks following your surgery
- Avoid getting soap and water in your eye

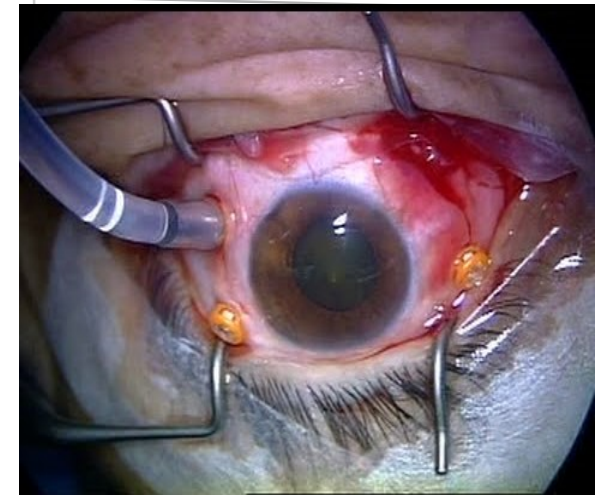


Call your doctor if you notice any problem after surgery

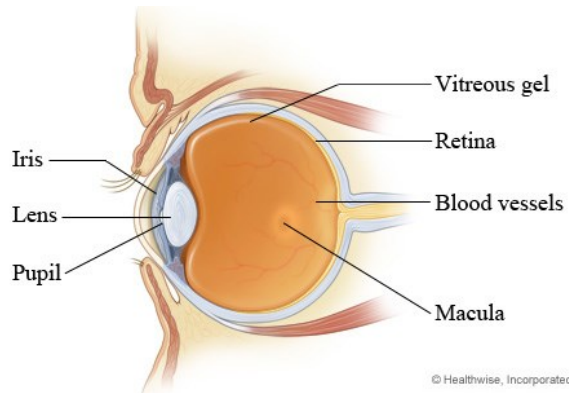
- Decreasing vision.
- Increasing pain, redness, or swelling around the eye.
- Any discharge from the eye.
- Any new floaters, flashes of light, or other changes in your field of vision.



**UNIVERSITY
OF MALAYA
MEDICAL CENTRE**



**PARS PLANA
VITRECTOMY
(PPV)**



What is Pars Plana?

The pars plana is the area located between the iris and retina.

What is vitrectomy?

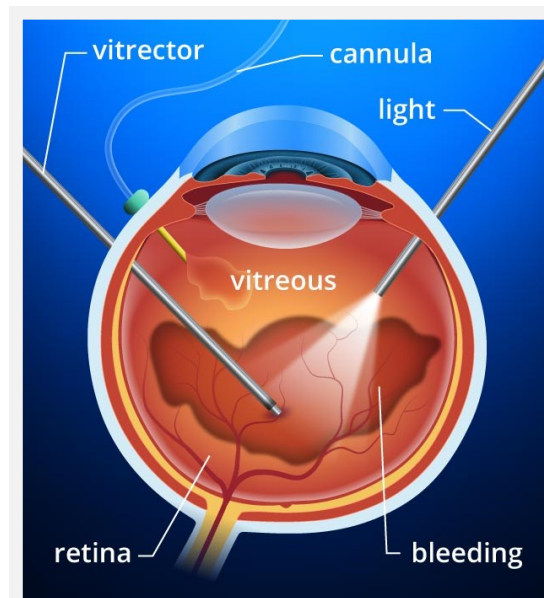
The eyes contain clear internal jelly called vitreous, which may have to be removed during the procedure called vitrectomy.

Reason for surgery

- A thin layer of nerve tissue at the back of the eye has detached, or pulled away. This can lead to vision loss and blindness.
- Blood in vitreous gel
- Infection inside the eye
- Retained lens fragments
- To remove foreign body

How the procedure works

- Done under operating microscope.
- Surgeon will make three tiny incisions in your eye and insert three separate instruments through each of these incisions.
- Fiber-optic lights are used to see inside the eye.
- Small tools are used to remove the vitreous gel and may treat other eye problem such as bleeding.
- End of the procedure doctor will patch on your eye.



The day of operation

- Do not eat or drink anything.
- Do not wear makeup and any jewellery.
- Dentures or bridges, contact lenses and glasses must be removed before going to the Operating Room.

Possible serious problems after surgery

- Cataract
- High pressure inside the eye. This happens most often in people who have glaucoma.
- More bleeding into the vitreous gel
- Infection
- Infection inside the eye.