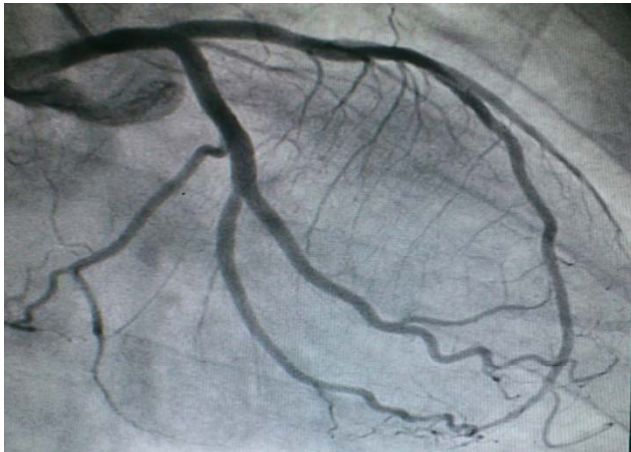
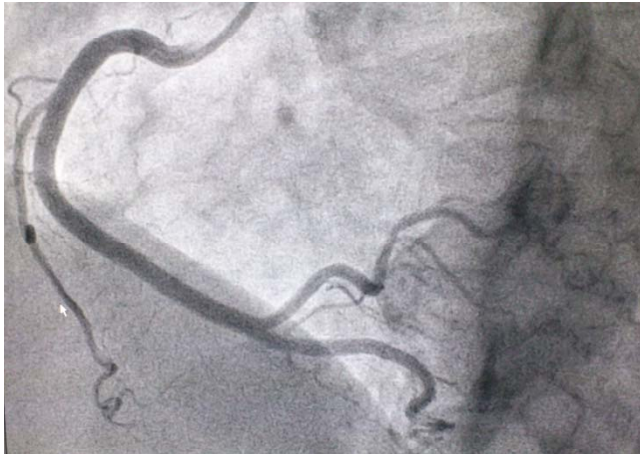




# CORONARY ANGIOGRAM



# WHAT IS CORONARY ANGIOGRAM?



- Coronary angiogram is a Radiographic image of blood vessels after they are filled with a contrast material.
- Is the "gold standard" for the evaluation of coronary artery disease (CAD)



# CORONARY ANGIOPLASTY

IS A PROCEDURE USED TO OPEN BLOCKED OR NARROWED CORONARY (HEART) ARTERIES. THE PROCEDURE IMPROVES BLOOD FLOW TO THE HEART MUSCLE.

*Angioplasty is a common medical procedure. It may be used to:*

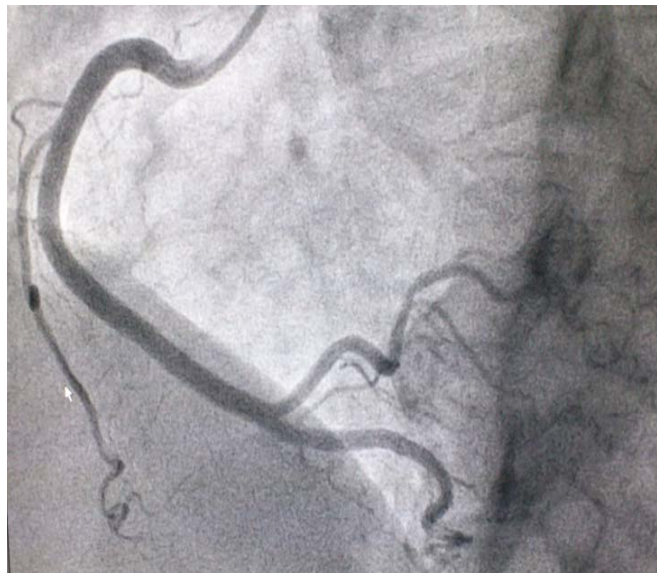
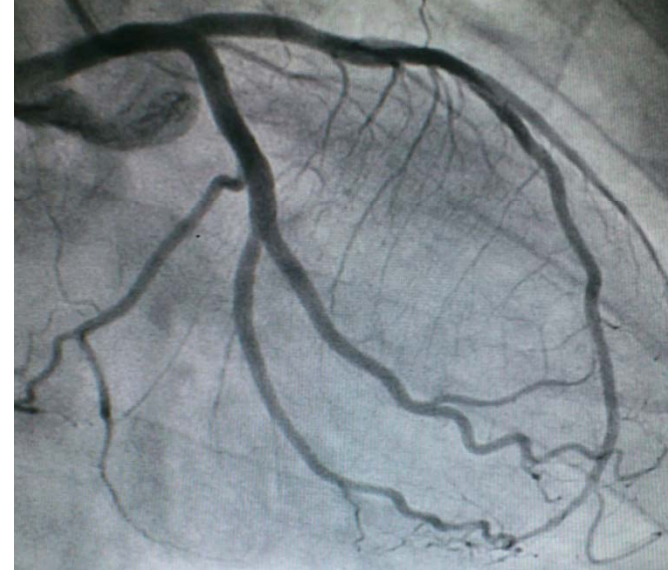
Improve symptoms of CHD, such as angina and shortness of breath.  
(Angina is chest pain or discomfort.)

Reduce damage to the heart muscle caused by a heart attack. A heart attack occurs if blood flow through a coronary artery is completely blocked. The blockage usually is due to a blood clot that forms on the surface of plaque. During angioplasty, a small balloon is expanded inside the coronary artery to relieve the blockage.

Reduce the risk of death in some patients.

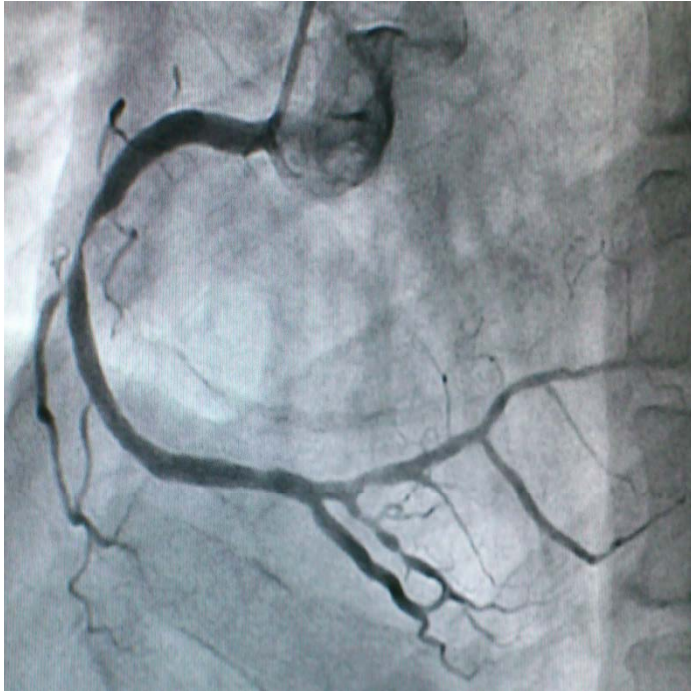


# NORMAL CORONARY ARTERY





# CORONARY ARTERY WITH DISEASE



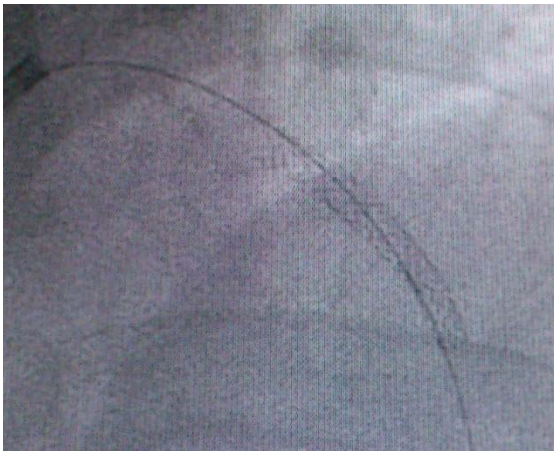
# ANGIOPLASTY DONE FOR THE DISEASE CORONARY ARTERY



1. DISEASE ARTERY



2. STENT DEPLOYMENT



3. CORONARY STENT



4. AFTER STENT DEPLOYMENT



# STENT BOOST



- Stent Boost visualizes stents in the coronary arteries in relation to the vessel lumen in real-time during coronary angiography.
- Stent Boost imaging is very useful for stent-in-stent situations, for identifying under deployment and malapposition, and for positioning a balloon.
- Stent visualization can also help you identify stent fractures or gaps between stents and correct them during the procedure.
- Stent Boost imaging saves time and money during stent procedures





# BI-PLANE



- Minimize X-ray dose and contrast medium for cardiac, vascular and pediatric examinations
- You get twice the information with a single contrast injection, the most critical factor for pediatric examinations.
- Minimizes foreshortened views of lesions and bifurcations.





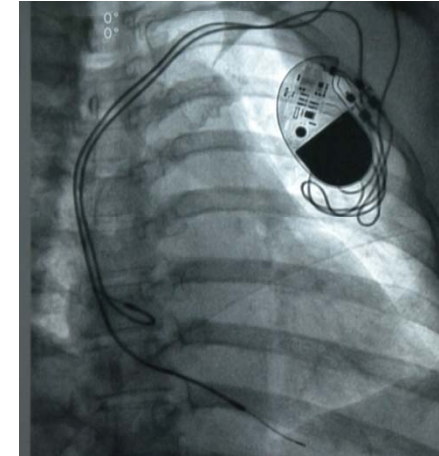
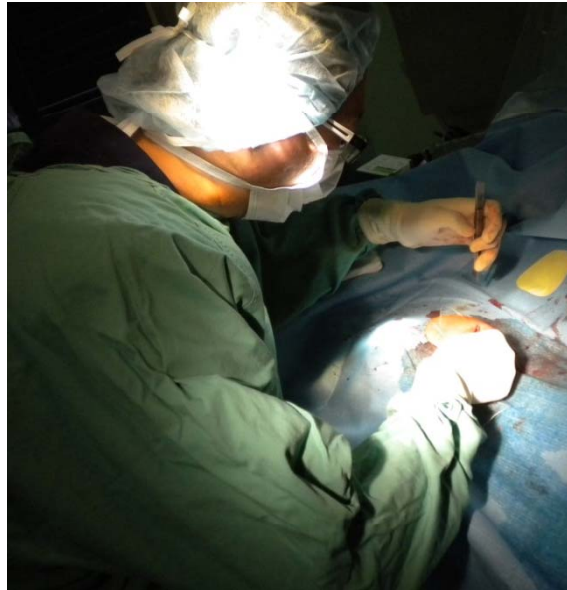
# SINGLE PLANE



- It combines a large field of view and high resolution flat detector with advanced diagnostic and 3D interventional tools .
- Advanced interventional tools for vascular and PTCA procedures
- Sharp, crisp visualization of small details and objects during cardiac and vascular interventions
- Dose Wise offers low X-ray dose and excellent image quality



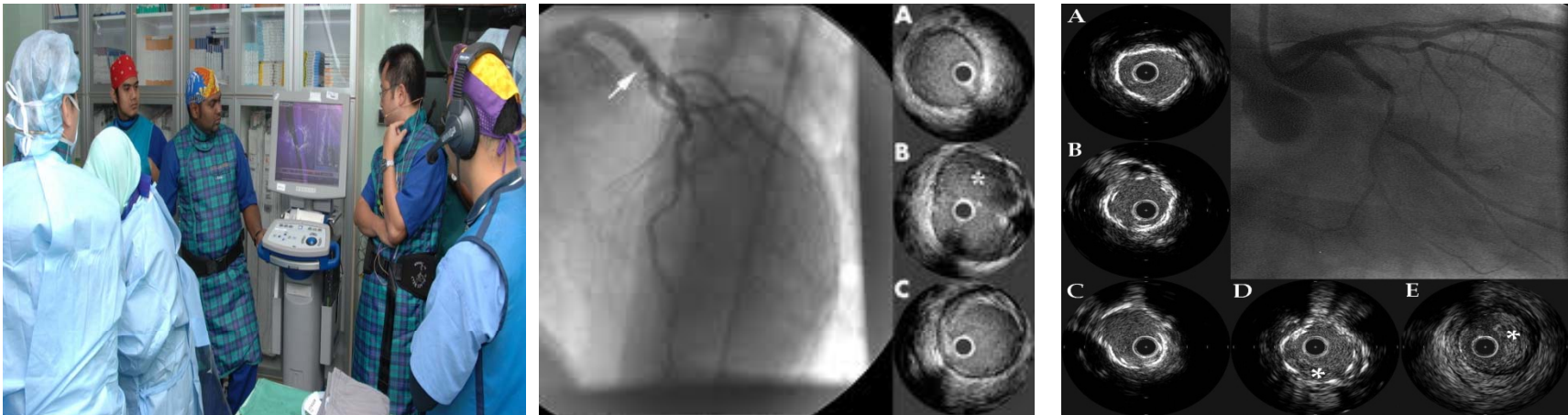
# PACEMAKER PROCEDURE



A PACEMAKER IS A SMALL DEVICE THAT'S PLACED IN THE CHEST OR ABDOMEN TO HELP CONTROL ABNORMAL HEART RHYTHMS. THIS DEVICE USES ELECTRICAL PULSES TO PROMPT THE HEART TO BEAT AT A NORMAL RATE.



# INTRAVASCULAR ULTRASOUND PROSEDURE (IVUS)



Intravascular Ultrasound (or IVUS) allows us to see a coronary artery from the inside-out. This unique point-of-view picture, generated in real time, yields information that goes beyond what is possible with routine imaging methods, such as coronary angiography, performed in the cath lab, or even non-invasive Multislice CT scans.





# CARDIAC LAB ENVIRONMENT





# CARDIAC LAB ENVIRONMENT

